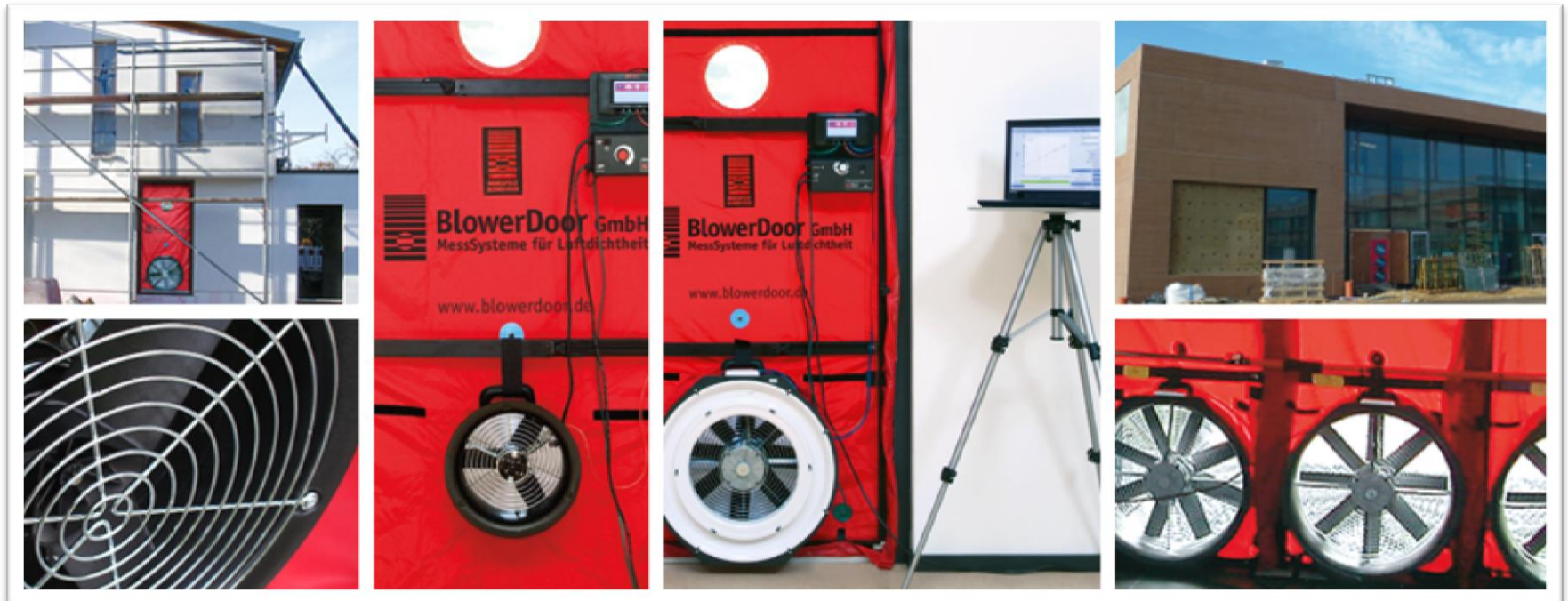


# 30 years of Minneapolis BlowerDoor: Illustration of different kind of buildings and applications





*Single family houses...*



## Apartment buildings...



5000 groß...und doch reichte ein  
BlowerDoor Gebläse...





Office buildings and administrative buildings...

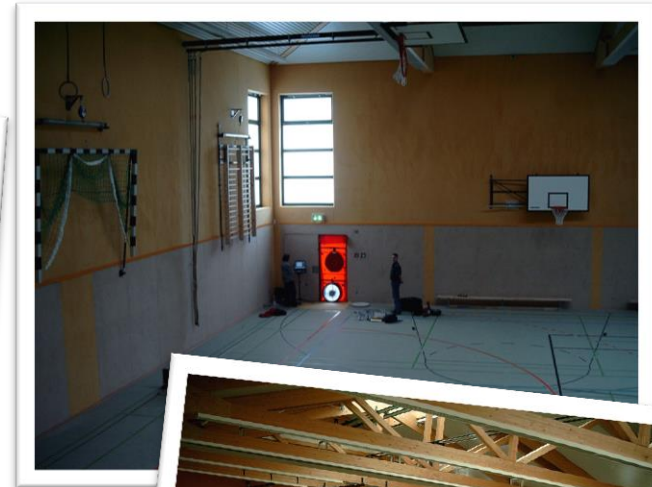
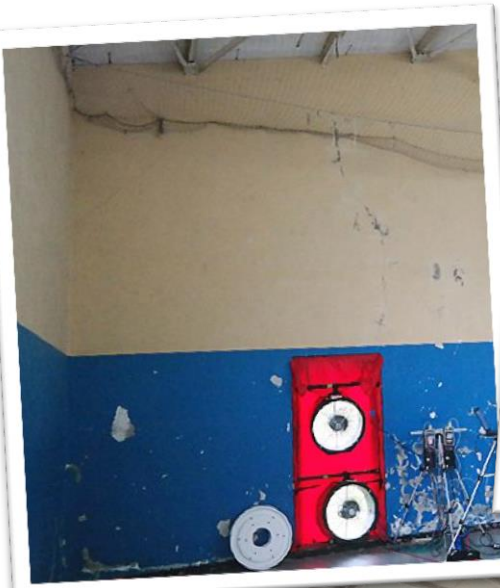
## Large sorting-depots...



...and of course schools are tested of being airtight.



Gyms also should be airtight....





...as well as indoor swimming pools.





BlowerDoor tests are also done in...



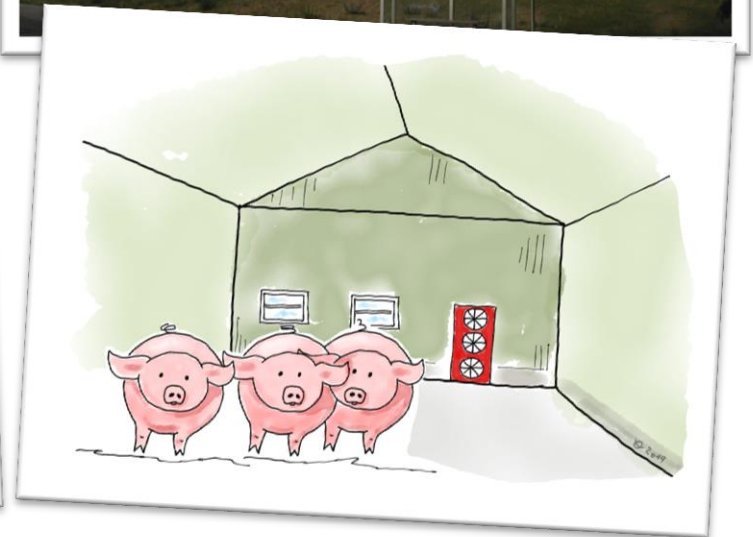
Libraries...



Clean rooms,  
e.g. server  
rooms and  
laboratories...



Prisons...

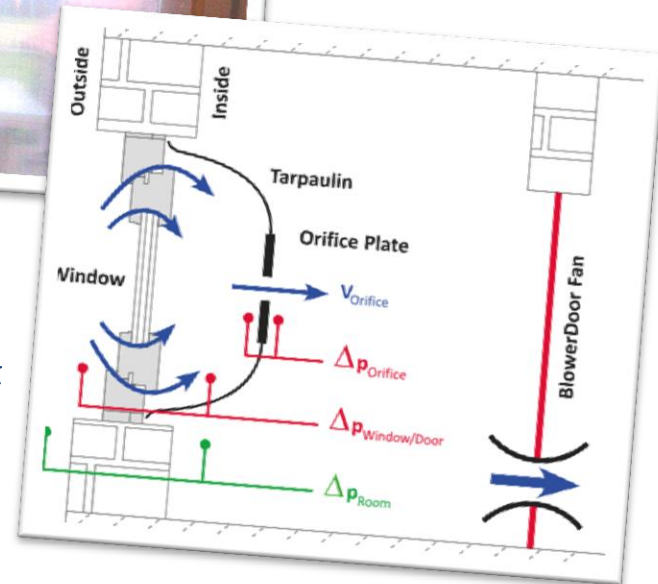


...and even animal stables.

Not only the buildings are very different – also the applications are very multifunctional ...



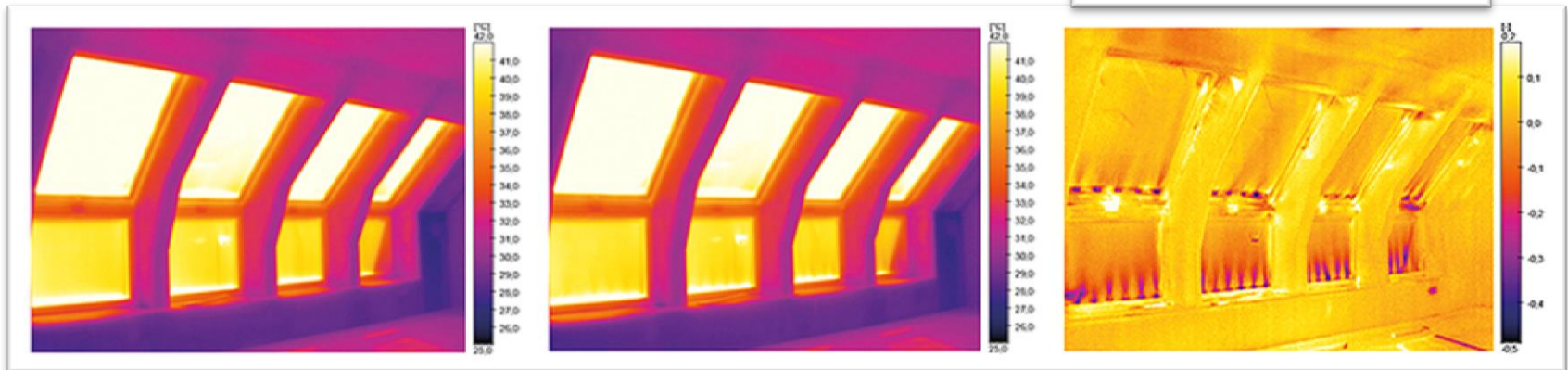
Testing building components with the Micro Leakage Meter (MLM)



Air permeability test with the Window and Door Measuring System

## BlowerDoor and thermography

Below: Sequential  
Analysis with  
Bau.Tools  
BlowerDoor





Left:  
Performance tests  
of ventilation systems  
with the FlowBlaster

Right:  
Fire Protection with  
the Minneapolis  
BlowerDoor



Measuring driving rain  
impermeability in combination  
with the Minneapolis BlowerDoor.





But what is the commonality of a construction site WC and the BlowerDoor? Right - these fantastic developments descend from Minneapolis! Reason enough to look more closely...

If you want to know more about that:  
<https://airtight-junkies.de/2017/06/dixi-blower-door/> Enjoy!

